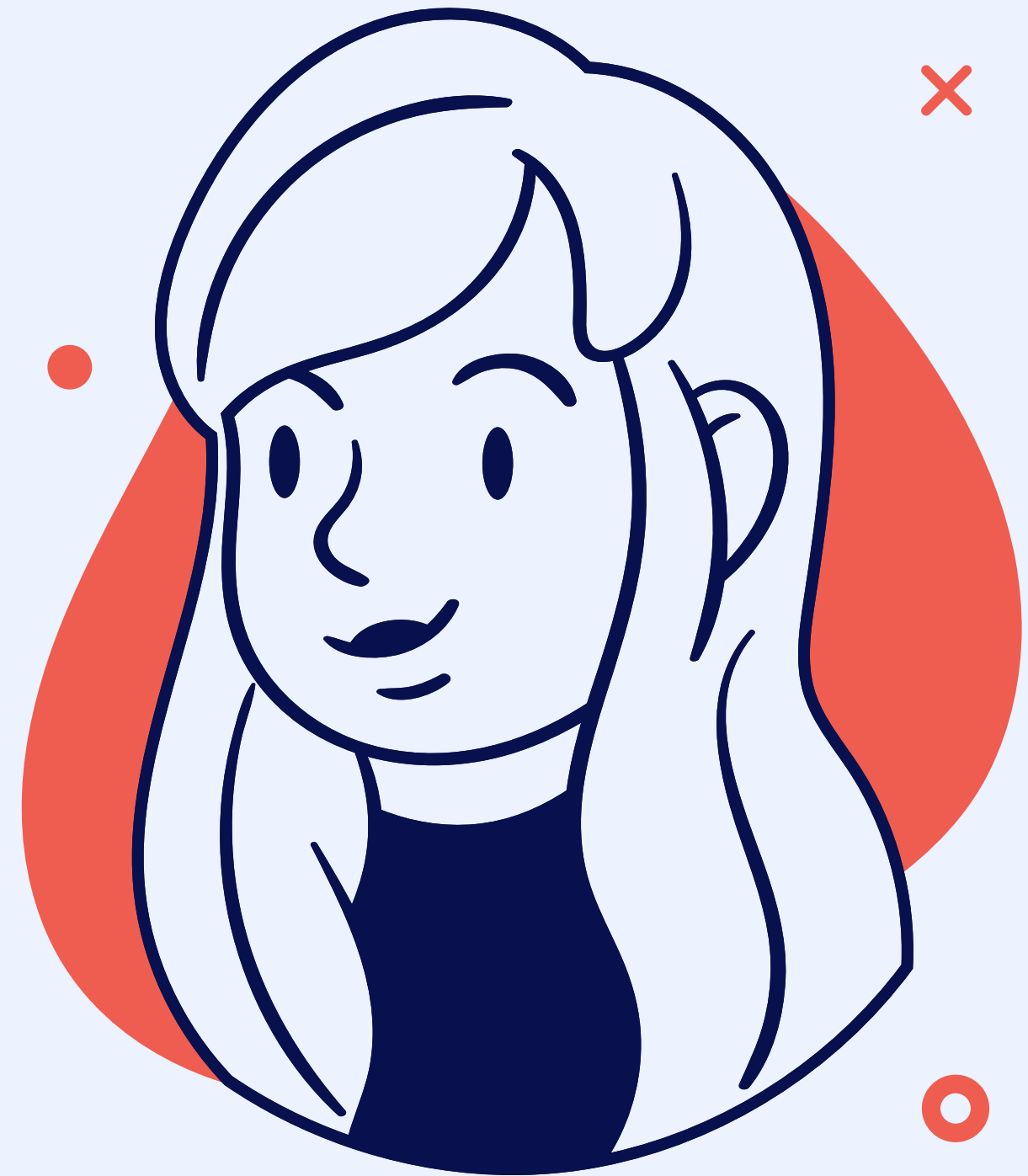


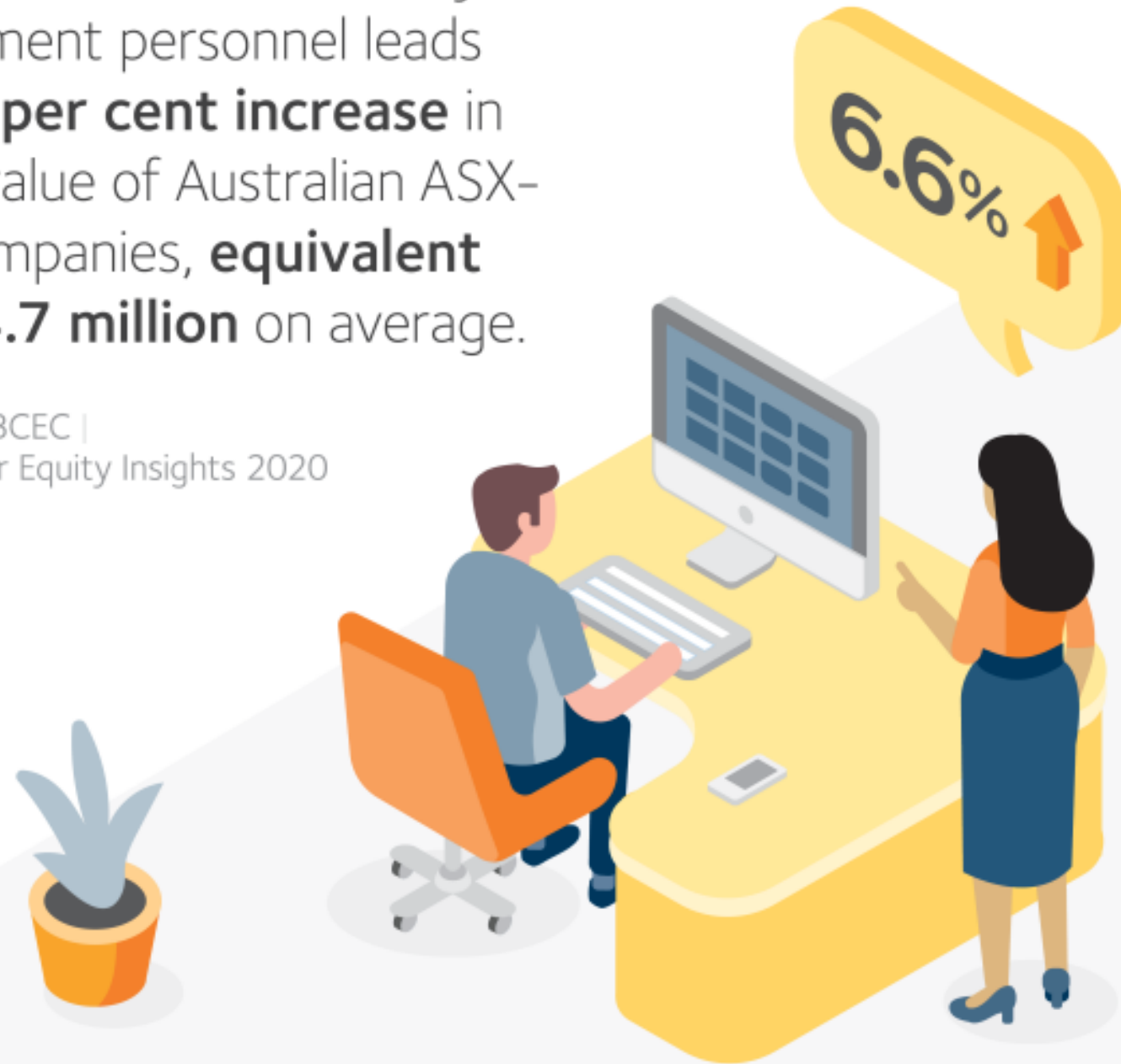
Women in Executive Leadership

Shark Tank Project

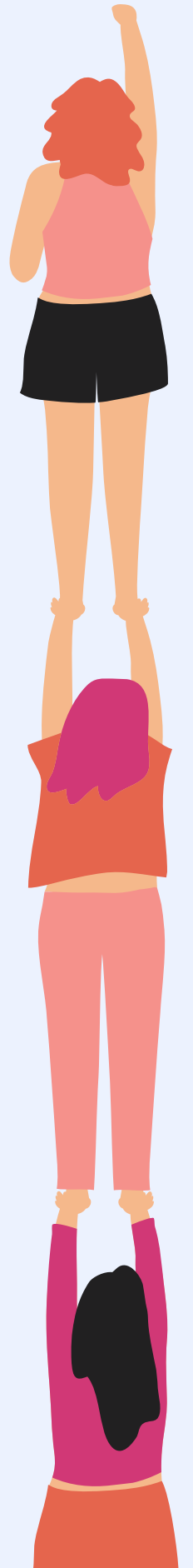


An **increase of 10 percentage points** or more in female key management personnel leads to a **6.6 per cent increase** in market value of Australian ASX-listed companies, **equivalent to \$104.7 million** on average.

Data source: BCEC |
WGEA Gender Equity Insights 2020



***Build an
Equal
World***



Future You Roundtable

— A Power App based Community





Features



Target User



Energetic Learner

I wanna learn from those who are better at some skills than me



Ambitious Climber

I wanna connect with people who have specific expertises

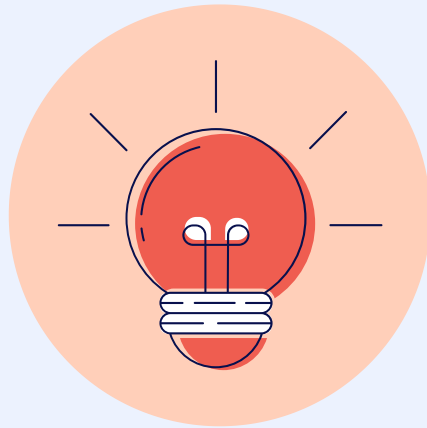


PM/Senior Lead

I wanna find people who have specific expertises to join the project



Why should I join?



Know Yourself

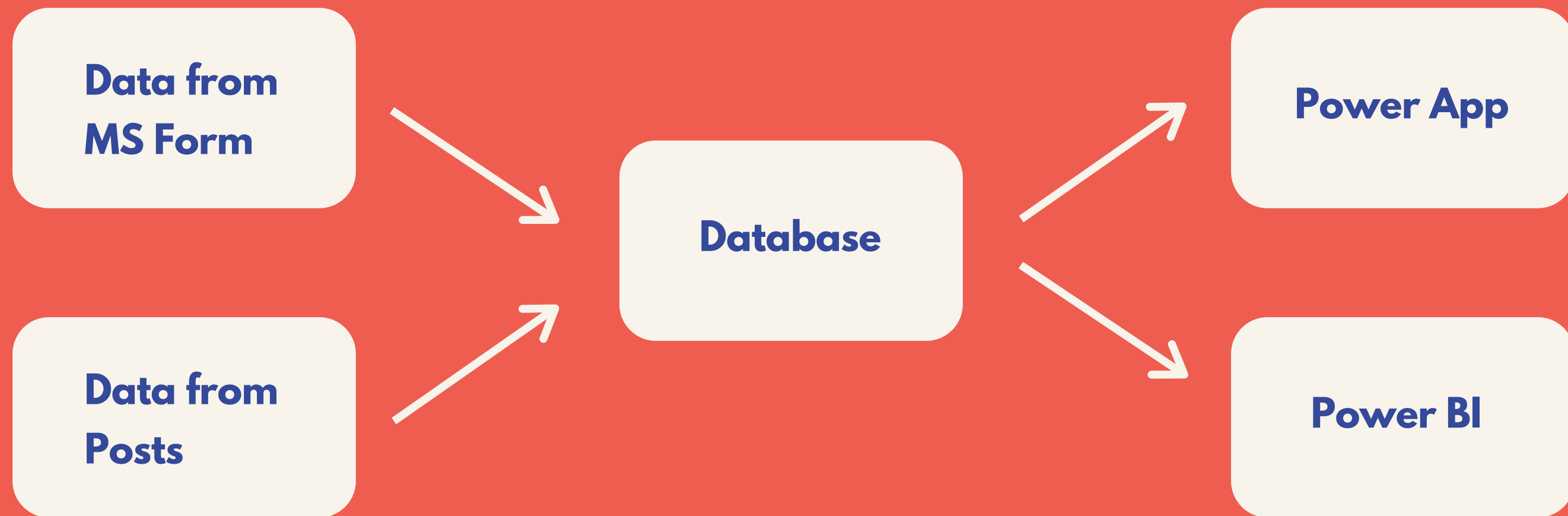


Upskill Yourself

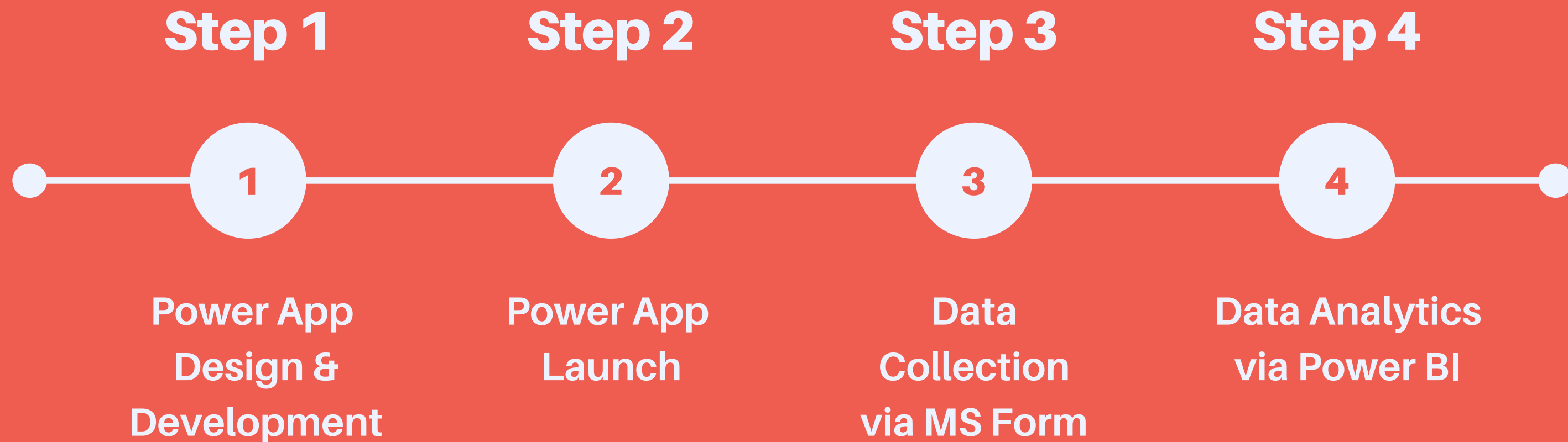


Be More Influential

Diagram



Future Roadmap





LEADERSHIP COMMUNITY

**WE ARE
STRONGER
TOGETHER!**

Thank you